

Concrete tests

## Tensile Splitting Device DV 500 S

- to use in connection with an existing universal testing machine
- for tensile splitting tests on cylinder, cubes and prism acc. EN 12390-6

### Technical data:

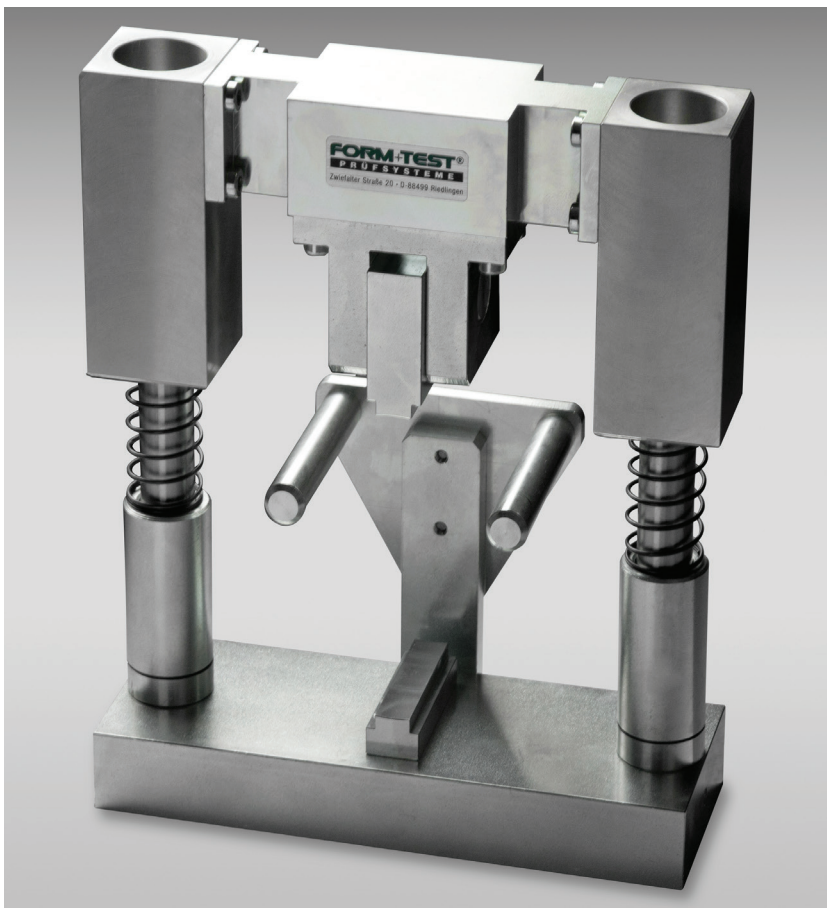
- maximum test load: 500 kN
- upper and lower edge length: 325 mm
- max. test chamber height: 170 mm
- min. test chamber height: 90 mm
- test chamber width: 200 mm

**B3178**

### Options:

hard fibre strips 440 x 15 x 4 mm  
EN 1338 – EN 12390-6  
packing unit with 100 pieces

**B3176**



## Tensile Splitting Device AL-Sp

- to use in connection with an existing universal testing machine
- for tensile splitting tests on cylinder discs  $\varnothing$  100 mm

### Technical data:

- maximum test load: 50 kN
- upper and lower edge length: 60 mm (concave edge)
- height: 260 mm
- width: 220 mm
- depth: 115 mm

**B3190**



Concrete tests

## Tensile Splitting Device DV 500

- to use in connection with an existing universal testing machine
- for tensile splitting tests on paving stones acc. EN 1338 on cubes and prism acc. EN 12390-6

### Technical data:

- maximum test load: 500 kN
- upper edge is movable
- length: 325 mm
- radius: 75 mm
- max. test chamber height: 165 mm
- min. test chamber height: 60 mm
- test chamber width: 200 mm

### B3170

### Options:

exchangeable straight pressure edge  
325 x 60 x 52 mm for tensile test on cylinders  
EN 12390-6

### B3174

hard fibre strips 440 x 15 x 4 mm  
EN 1338 – EN 12390-6  
packing unit with 100 pieces

### B3176



**FORM+TEST Seidner & Co. GmbH**  
Post box 1154 • 88491 Riedlingen  
phone: +49 (0) 7371 9302-0 • fax: -99  
www.formtest.de  
sales@formtest.de