

 Choose the Original
Choose Success!

FORM+TEST
PRÜFSYSTEME

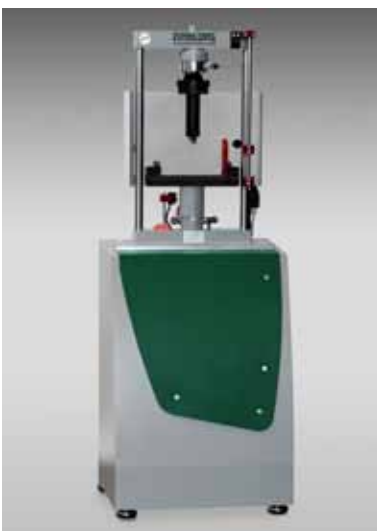


Bending testing machine DELTA 3-20 DM1-S

- Accuracy acc. to
DIN EN ISO 7500-1, class 1
- For bending tests on specimens
made of cement, mortar, screed,
building plaster especially acc.
to EN 196, EN 1015-11,
ASTM C348, EN 12808-3,
EN 13813, EN 13892-3, EN 13279-2,
EN 13454-2, EN 993-6
- With Accessories / Options also
for compression tests
- On compact base or with
separate drive station AS C 20N
or AS C 20K (see picture)
- Automatic load increase through
control via digital controller
DIGIMAXX® C-20 with servo
valve in closed loop system with
permanent comparison of nomi-
nal value and actual value

Technical dates – testing machine

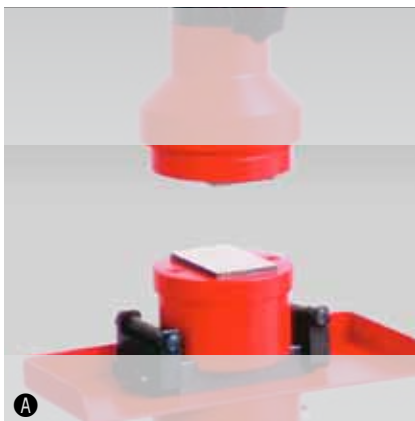
- 2-column test frame
 - single acting test cylinder
 - Test load max.: 20 kN
 - Working pressure max.: 159 bar
 - Piston stroke: 50 mm
 - Test chamber height: 50 mm
 - Bending roller length: 50 mm
 - Bending roller: \varnothing 10 mm
 - Lower bending roller distance: fix 100 mm
 - Measuring range: 0.40 ... 20 kN
 - Display range: 0 ... 20 kN
 - Load measuring via shear force wear-
resistant electronic precision load cell
-
- Voltage: 3x 400 Volt, 50 Hz, 1,5 kW
 - Weight: approx. 150 kg





Technical dates - digital display

- LCD-screen-display, 5 numbers
- Resolution 60,000 digits
- Automatic zero point correction
- Programmable calculation of the strength of 30 different specimens as well as the corresponding standard speeds
- Display of strength in N/mm² or Mpa
- Adjustable display in kN, N, kg, kp, to or bar
- Peak value memory and reset key
- Code protected calibration / linearization
- Serial interface RS 232 to recall the peak value
- Indication storage



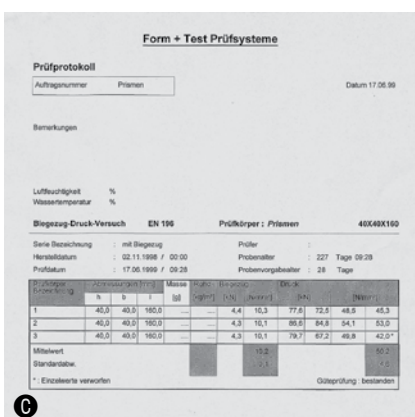
Options:

- Ⓐ Set compression plates with pendulum axle for bending equipment, Dimensions 40 x 40 mm
- Ⓑ Extended bending table
Bending roller distance 30 ... 250 mm or
Bending roller distance 30 ... 500 mm
- Ⓒ Building material test software PROTEUS
- Ⓓ Drive station AS C20N-PC
 - Transfer-Software WinTrans
 - Higher test chamber
 - Extended piston stroke
 - Elektronik displacement measuring and control equipment
 - Deflection measuring equipment
 - Built in printer



Available with following test loads:

- for compression test: 10, 20 and 30 kN



FORM+TEST Seidner & Co. GmbH

Zwiefalter Str. 20 • D-88499 Riedlingen
 Post box 1154 • D-88491 Riedlingen
 phone: +49 (0) 7371 9302-0
 fax: +49 (0) 7371 9302-99
 www.formtest.de
 info@formtest.de