

 Choose the Original
Choose Success!



FORM+TEST[®]
PRÜFSYSTEME

Compression testing machine

MEGA 110-200 DM 1

- Accuracy according to DIN EN ISO 7500-1, class 1
- For compression tests according to EN 196, EN 1015, EN 13813, EN 13892-3 with options also acc. EN 12504-1 and EN 993-5
- With semi automatical load increase, control via control valve with digital controller DIGIMAXX[®] M-10 or M-11 with actual speed

Technical dates - compression frame

- Test load max.: 200 kN
- Working pressure max.: 192,55 bar
- Piston stroke: 50 mm
- Upper platen: 40 mm
- Lower platen: 40 mm
- Hardness of platens: 58-62 HRC > 600 HV
- Test chamber height: 50 mm
- Clear distance between columns: 226 mm
- Measuring range: 2,00 ... 200 kN
- Display range: 0 ... 200 kN
- Load measuring by electronic load cell, built-in free of shear
- Voltage: 3x 400 Volt, 50 Hz, 1,5 kW
- Weight: appr. 275 kg



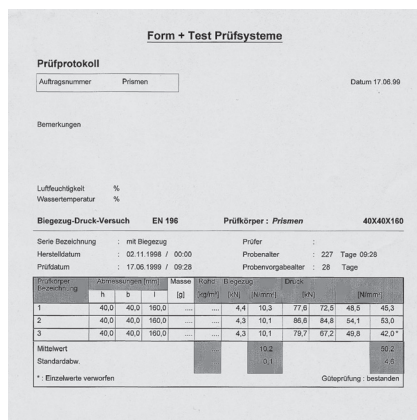
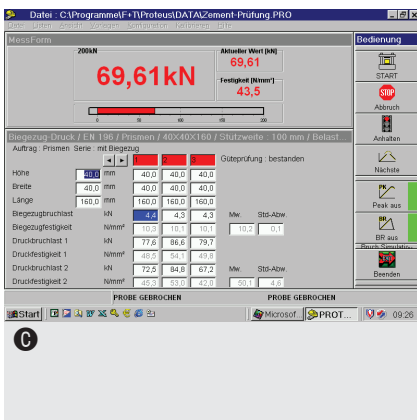
Technical dates - digital display

- LCD-screen-display, 5 numbers, 16 Bit processor technology
- Resolution 60.000 Digits
- Automatic zero point correction
- Programmable calculation of the strength of 30 different specimens (M10) of 10 different specimens (M11)
- Display of the strength in N/mm² or Mpa
- Adjustable display in kN, N, kg, kp, to or bar
- Peak value memory and reset key
- Code protected calibration / linearization
- Serial interface RS 232 to recall the peak value
- Memory



Options:

- Enlargement (higher) test chamber
- Enlargement (bigger) compression plates
Dimension 110 x 110 x 30 mm
Dimension Ø 210 x 40 mm
Dimension 210 x 210 x 40 mm
- Ⓐ Compression device DV 600 AZ
- Ⓑ Bending device BV 10 OM
- Ⓒ Building material test software PROTEUS
- Transfer software WinTrans



Available with following test loads:

- 100 kN, 200 kN, 300 kN

FORM+TEST Seidner & Co. GmbH
 Zwiefalter Str. 20 • D-88499 Riedlingen
 Postfach 1154 • D-88491 Riedlingen
 Tel.: +49 (0) 7371 9302-0
 Fax: +49 (0) 7371 9302-99
 www.formtest.de
 info@formtest.de