

 Choose the Original
Choose Success!

FORM+TEST
PRÜFSYSTEME



Compression and bending testing machine MEGA 100-200-10 DM1-S

- accuracy according to DIN EN ISO 7500-1, class 1
- for compression and flexure strength tests according to EN 196, EN 1015, EN 13892-3 with options also acc. EN 12504-1 and EN 993-5
- with automatical load increase, control via digital controller DIGIMAXX® C-20 in closed loop system

Technical dates - compression frame

- test load max.: 200 kN
- working pressure max.: 192.55 bar
- piston stroke: 50 mm
- upper platen: 40 mm
- lower platen: 40 mm
- hardness of platens: 58-62 HRC > 600 HV
- test chamber height: 50 mm
- clear distance between columns: 226 mm
- measuring range: 2.00 ... 200 kN
- display range: 0 ... 200 kN

Technical dates - bending (flexure) frame

- test load max.: 10 kN
- working pressure max.: 79,57 bar
- piston stroke (ram travel): 50 mm
- test chamber height: 50 mm
- bending roller length: 50 mm
- bending roller Ø: 10 mm
- bending roller distance: 100 mm
- measuring range: 0.2 ... 10 kN
- display range: 0 ... 10 kN
- load measuring by one electronic load cell for compression and one for bending, built-in free of shear
- voltage: 3x 400 Volt, 50 Hz, 1.5 kW
- weight: appr. 300 kg





Technical dates - digital controller

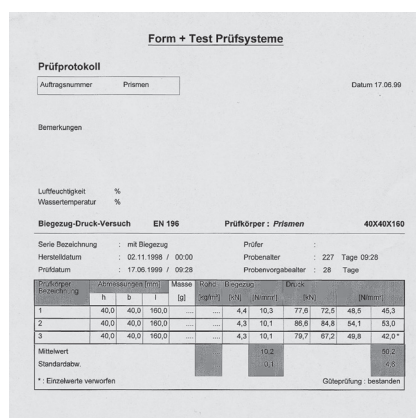
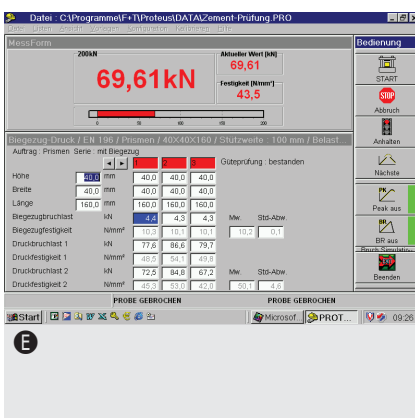
- LCD-screen-display, 5 numbers, 16 Bit processor technology
- resolution 60,000 Digits
- automatic zero point correction
- programmable calculation of the strength of 30 different specimens as well as the corresponding standard speeds
- display of the strength in N/mm² or Mpa
- adjustable display in kN, N, kg, kp, to or bar
- peak value memory and reset key
- code protected calibration / linearization
- serial interface RS 232 to recall the peak value
- memory

Options:

- enlargement (higher) test chamber
- enlargement (bigger) compression plates dimension 110 x 110 x 30 mm dimension Ø 210 x 40 mm dimension 210 x 210 x 40 mm
- Ⓐ set of platen 40 x 40 mm for bending frame
- Ⓑ bending table with moveable bending roller distance 30 ... 250 mm
- Ⓒ compression device DV 600 AZ
- Ⓓ bending device BV 10 OM
- Ⓔ building material test software PROTEUS
- transfer software WinTrans

Available with following test loads:

- for compression: 100 kN, 200 kN, 300 kN
- for bending: 10 kN, 20 kN, 30 kN



FORM+TEST Seidner & Co. GmbH

Post box 1154 • D-88491 Riedlingen
phone: +49 (0) 7371 9302-0 • fax: -99

www.formtest.de
sales@formtest.de